

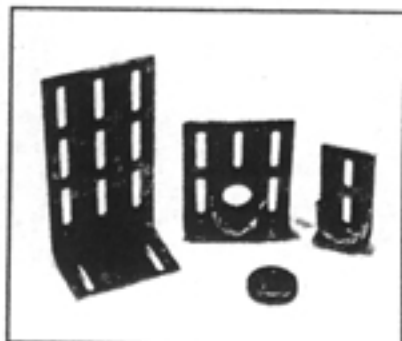


ELERO USA, INC.

INNOVATORS OF TUBULAR &
LIFT-TILT MOTORS/CONTROLS

ELERO HEAVY DUTY L-BRACKETS

The Elero heavy duty L-bracket system is designed for those applications where something more rugged than the standard plastic bracket is required or where an extension greater than 2-5/8 inches is needed. These brackets are fabricated from 3mm (1/8") steel plate and are zinc plated for superior strength and excellent corrosion resistance. The brackets come in three different lengths with either single slots, double slots or triple slots in the support leg. This allows for tube centerline mounting distances as small as 1-1/2 inches or as large as 6-1/2 inches. These brackets can be wall mounted or ceiling mounted and easily accept motor mounts or mounting frames with a standard 60mm (2.36") hole spacing.

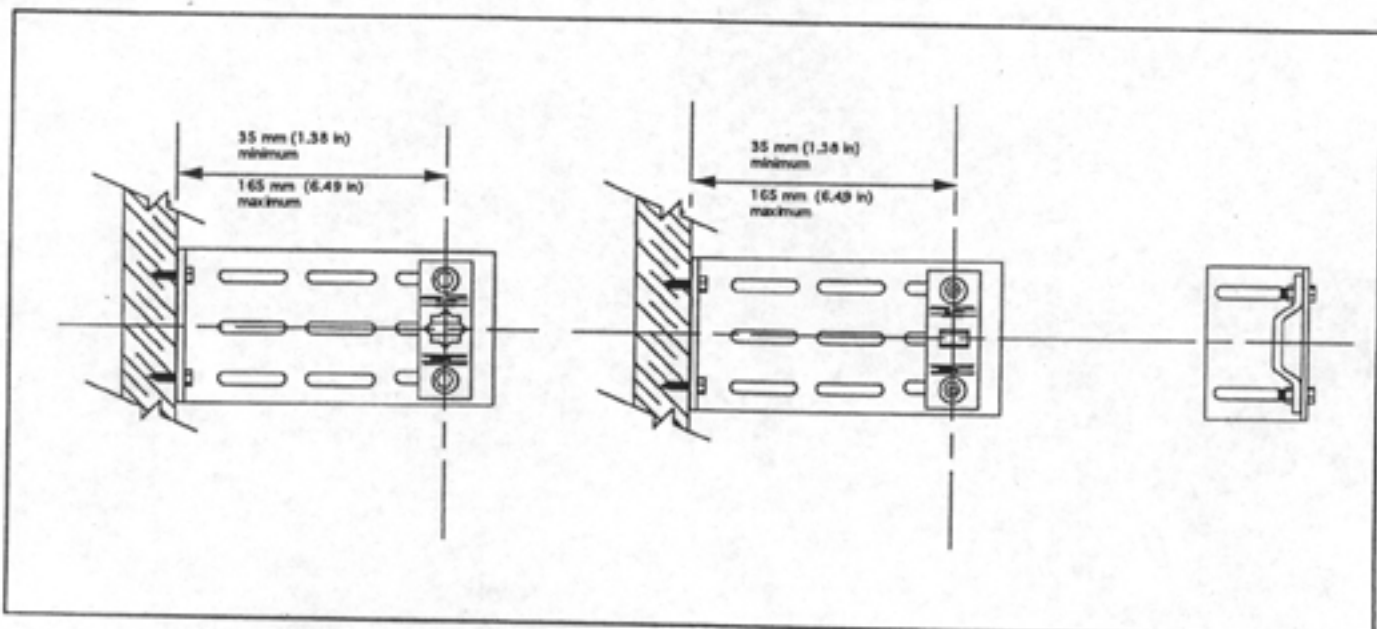


The basic L-bracket has a 60mm (2.36") by 90mm (3.54") leg that forms the mounting base and is provided with two 7mm (.28") by 40mm (1.57") slotted holes. This ensures a large surface area for maximum support and flexibility in making field adjustments for final alignment. The 1-Slot bracket extends 80mm (3.15") from the mounting surface which permits centerline adjustment from 35mm (1.38") to 65mm (2.56"). The 2-Slot bracket extends 130mm (5.12") from the mounting surface for centerline adjustment up to 115mm (4.53"). The 3-Slot bracket adds another set of slots for adjustment up to 165mm (6.50"). When used with the Elero motor mounting brackets, your tube can be located at any position from 35mm (1.38") to 165mm (6.50"). This will accommodate a roll dimension up to 12 inch diameter.

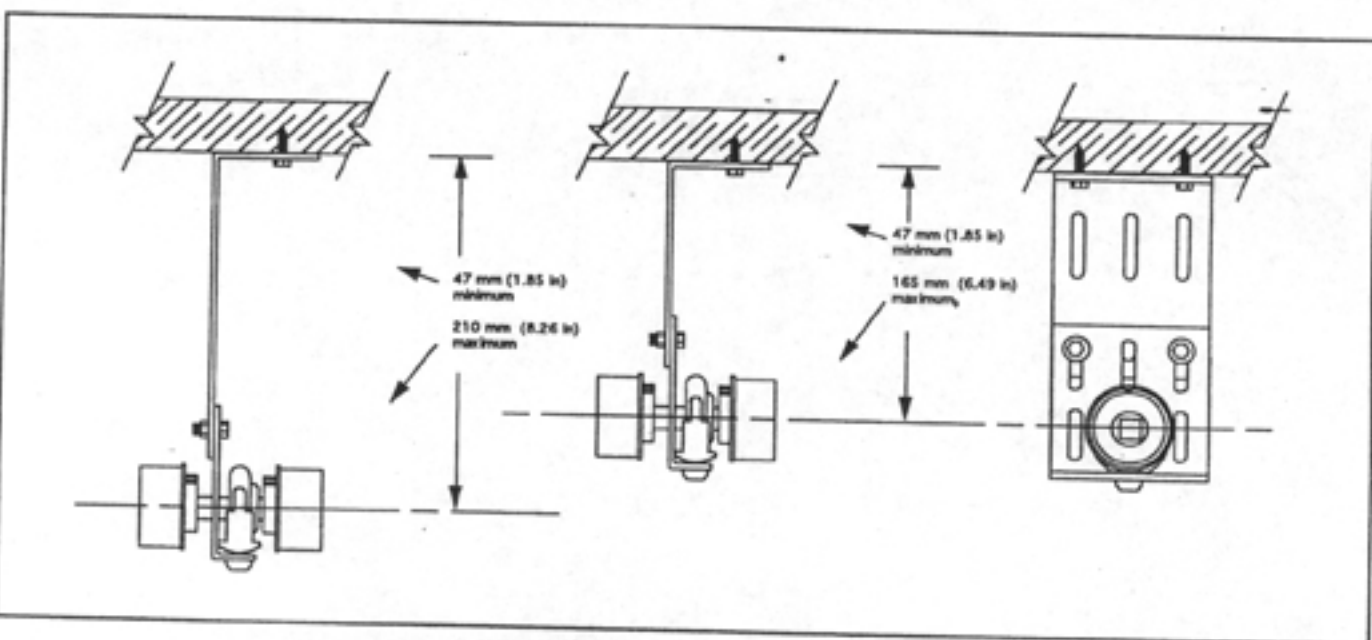
In addition to these L-brackets, Elero offers two bearing holders, narrow or wide, which can be used to support the idler end of the tube. The wide bearing holder can also be used with a tube coupler as a center support. Both are designed to hold a 40mm OD (1.57") bearing and are commonly used with a 10mm ID (.39") bearing as an idler bracket or an 18mm ID (.71") bearing as a center support. The heavy duty bearing bracket is 90mm (3.54") wide the same as the basic L-bracket and provides a perfect match



for ceiling mount applications. It can also be used in wall mount applications, providing a rugged 2-bolt mount with a centerline extension up to 135mm (5.31"). Elero offers a narrow bearing bracket for use in wall mount applications. It provides a 165mm (6.50") clearance from centerline.

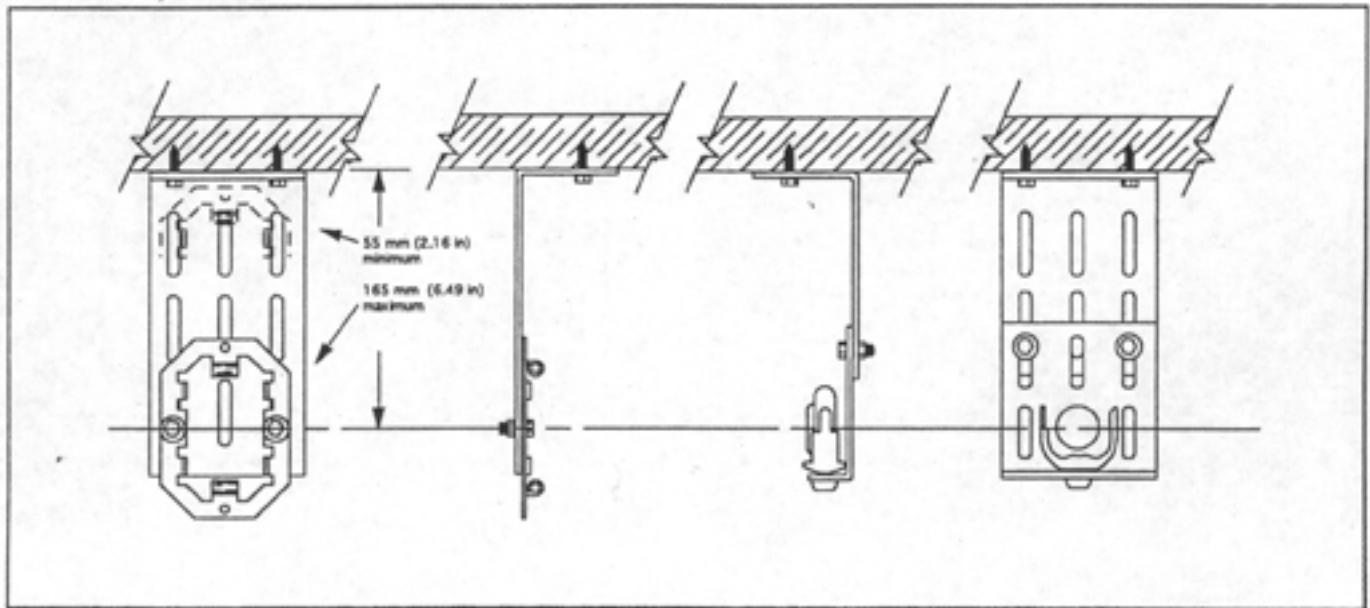


The Elero heavy duty L-bracket system is compatible with Elero motor mount brackets. The system accepts the quick release brackets for the Type-8 or Type-9 motors, or any of the brackets with a 60mm (2.36") mounting dimension. All of the brackets can be used in both ceiling and wall mount arrangements.

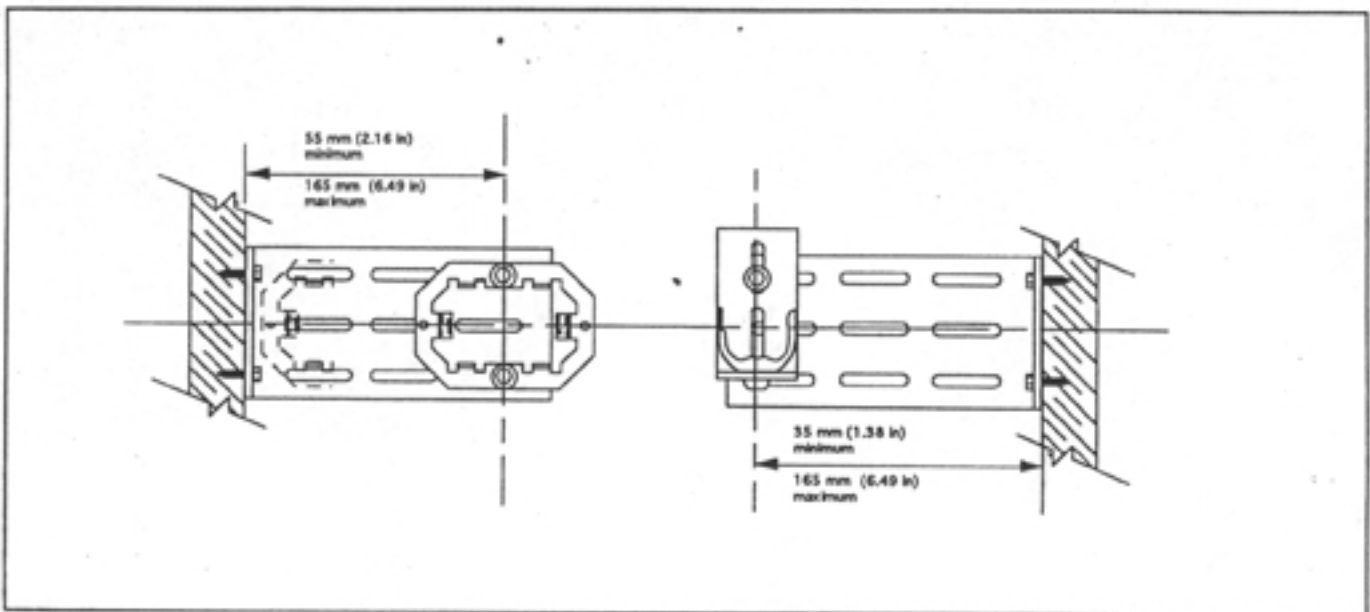


The heavy duty bearing bracket is designed to be used with the L-Brackets and a tube coupler to provide a center support assembly. It can be adjusted through the full range of the motor mount brackets and using the 3-slot bracket can be extended as much as 8-1/4 inches.

HEAVY DUTY L-BRACKETS: *Installation*



The Elero heavy duty L-bracket system in combination with the Type-9 Motor mounting frame provides an adjustable motor mount with 55mm (2.16") to 165mm (6.50") clearance. This system includes the quick release features of the Type-9 flush mounting frame and the precision movement of the ball bearing idler bracket. The Elero flush mount bracket can also be attached directly without the quick release frame. The locking screw secures the motor in this bracket. The heavy duty bearing bracket can function as an idler bracket when fitted with idler bearing or as a center support coupler when equipped with center bearing.



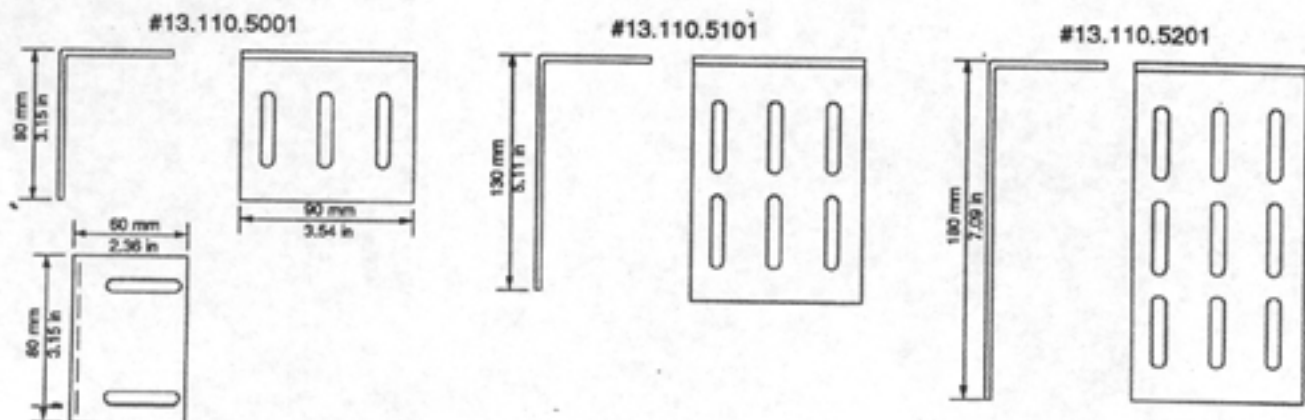
In wall mount applications the Elero heavy duty L-bracket system can be used with the Type-9 Motor mounting frame to provide an adjustable motor mount from 55mm (2.16") to 165mm (6.50") from the wall. The slotted mounting base allows for precise adjustment for tube length and the slotted extension bracket allows for precise adjustment of clearance from the wall. The narrow bearing bracket will provide precise alignment of an idler support bearing to match the motor bracket.

ELERO USA, INC.

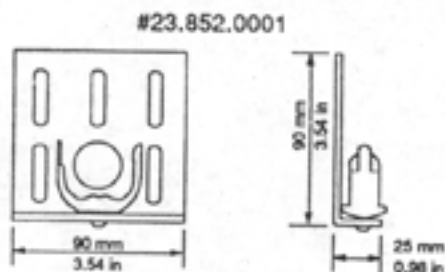
INNOVATORS OF TUBULAR &
LIFT-TILT MOTORS/CONTROLS

HEAVY DUTY L-BRACKETS: *Dimensions & Part Numbers*

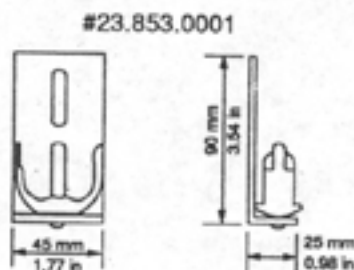
L-Bracket - Heavy Duty



Idler Bracket - Heavy Duty Wide



Idler Bracket - Narrow (for inside mount)



Ball Bearing Inserts

#13.300.8601



Bearing for 10mm Shaft

#13.301.6101



Bearing for 18mm Shaft

For More Information
Call 1-800-752-8677 for details

elero

ELERO USA, INC.
10869 ALDER CIRCLE
DALLAS, TEXAS 75238