



CE 0682

 **Operating instructions**  
Please keep these instructions in a safe place!

elero USA  
10827 Alder Circle  
USA-Dallas  
Texas 75238  
info@eleroUSA.com

elero GmbH  
Antriebstechnik  
Linsenhofer Str. 59-63  
D-72660 Beuren  
info@elero.de  
www.elero.com

**Safety instructions** ..... USA- 2

**Instruction to the user** ..... USA- 3

**Explanation of buttons** ..... USA- 4

**General information** ..... USA- 5

**Designated use** ..... USA- 5

**Wall holder installation** ..... USA- 6

**Explanation of functions** ..... USA- 7

    Manual/Automatic sliding switch/Transmission control light, Reset button ..... USA- 7

    Intermediate position, ventilation/reverse position 24-hr button, Week button ..... USA- 8

    Manual operation functions ..... USA- 8

    Automatic operation functions ..... USA- 8

**Programming radio channel settings** ..... USA- 9

    Programming transmitter/channel ..... USA- 9

    Programming additional transmitters ..... USA-10

**Intermediate position for roller shutter/venetian blind** USA- 11

    Programming intermediate position ..... USA- 11

    Programming ventilation/reverse position ..... USA- 11

    Adjustment to intermediate position ..... USA- 12

    Adjustment to ventilation/reverse position ..... USA- 12

    Deleting intermediate position ..... USA- 12

    Deleting ventilation/reverse position ..... USA- 12

**Deleting radio channel settings** ..... USA- 13

    Deleting individual transmitters ..... USA- 13

    Deleting all transmitters ..... USA- 13

**Programming daily switching times** ..... USA- 14

    UP control command/DOWN control command/Deleting commands ..... USA- 14

**Programming weekly switching times** ..... USA- 15

    UP control command/DOWN control command/Deleting commands ..... USA- 15

**Technical data** ..... USA- 16

**Battery replacement** ..... USA- 16

**Cleaning** ..... USA- 17

**Troubleshooting** ..... USA- 17

**General declaration of conformity** ..... USA- 17



Warning!

**Important safety instructions!**

**Always observe the following instructions.**

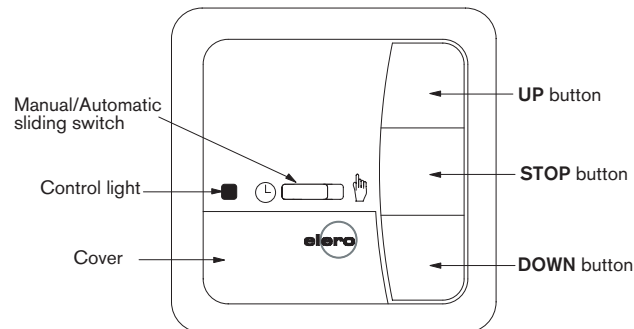
- For use in dry rooms only.
- Use unmodified **elero** original parts only.
- Keep persons away from the systems guide track.
- Keep children away from controls.
- Always comply with national stipulations.
- Always dispose of used batteries properly. Always replace batteries with identical type (LR 03; AAA).
- If the system is controlled by one or more devices, the system guide track must be visible during operation.
- The equipment contains small parts that could be swallowed.

This equipment has been tested and found to comply with the limits for a class B digital device, pursuant to part 15 of the FCC Rules. These limits are designed to provide reasonable protection against harmful interference in a residential installation. This equipment generates, uses and can radiate radio frequency energy and if not installed and used in accordance with the instructions, may cause harmful interference to radio communications. However, there is no guarantee that interference will not occur in a particular installation. If this equipment does cause harmful interference to radio or television reception, which can be determined by turning the equipment off and on, the user is encouraged to try to correct the interference by one or more of the following measures:

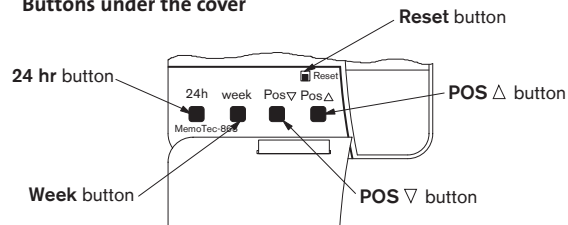
- Reorient or relocate the receiving antenna.
- Increase the separation between the equipment and receiver.
- Connect the equipment into an outlet on a circuit different from that to which the receiver is connected.
- Consult the dealer or an experienced radio/TV technician for help.

Operation with non-approved equipment is likely to result in interference to radio and TV reception. The user is cautioned that changes and modifications made to the equipment without the approval of manufacturer could void the user's authority to operate this equipment.

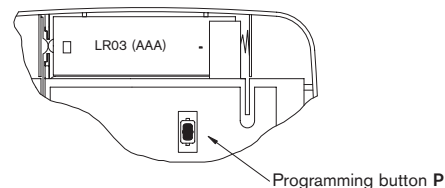
### Explanation of buttons



### Buttons under the cover



### Programming switch (located on back of device)



### General information

The MemoTec-915 operates your drive at the programmed switching times.

The MemoTec-915 device can be operated manually at all times.

The MemoTec-915 device is characterised by its user-friendly operation.

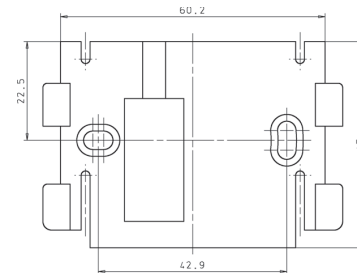
### Designated use

The MemoTec-915 may be used to operate roller shutters/venetian blinds **only**.

### Wall holder installation

**Note:** Radio base stations transmitting in the same frequency range may cause reception interference.


Please note that the operating range of the radio signal is limited by legislation as well as by the product design.




- Before installing the wall holder, always ensure that the transmitter and receiver are in proper working order.
- Mount the holder onto the wall using the two screws provided.

### Explanation of functions

#### Manual/Automatic sliding switch

When the sliding switch is set to **MANUAL** , only manual control commands are executed.

When the sliding switch is set to **AUTO** , manual and automatic control commands are executed (time).

#### Control light

The control light flashes 3 times to confirm switching time settings.

#### RESET button:

Press the **Reset** button (with a ballpoint pen or similar object) to delete all control command settings, the intermediate position and the ventilation/reverse position.

#### Intermediate position:

The intermediate position lies between the upper and lower limits of the roller shutter/venetian blind and can be freely selected. The roller shutter/venetian blind can be moved into this position from the upper end limit after programming.

To adjust the shutter/blind into the intermediate position, press the **DOWN** button **twice** in quick succession.

In venetian blind mode, the blind slats are turned automatically when the intermediate position has been reached, provided a reverse position has been pre-programmed.

#### Ventilation/reverse position:

The ventilation/reverse position lies between the upper and lower limits of your roller shutter/venetian blind and can be freely selected. Your roller shutter can be moved into this position from the lower end limit until the ventilation slits are open. In venetian blind mode, the blind slats are turned.

To adjust the shutter/blind into the ventilation/reverse position, press the **UP** button **twice** in quick succession.

### 24 hr button

The **24-hour** button can be used to programme one UP and one DOWN command. These commands are then automatically executed every 24 hours.

### Week button

The **week** button can be used to programme one UP and one DOWN control command for each week day. These switching commands are then automatically executed every day and repeated every 7 days. If weekly control commands have been programmed, no daily control commands are executed.

### Function menu

#### Manual operation functions

- UP, STOP, DOWN
- Intermediate position
- Ventilation/reverse position

#### Automatic operation functions

When the system is in automatic mode, programmed control commands are executed.

- UP, STOP, DOWN
- Intermediate position
- Ventilation/reverse position
- Daily/weekly switching times (max. 2 control commands per day)

### Programming radio channel settings

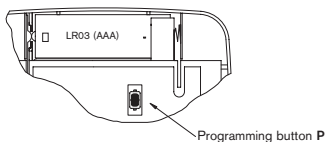
#### Programming transmitter/channel

**Prerequisite:** The drive must be installed.

1. With pre-installed receivers, the fuse must be disconnected and reconnected after a few seconds.

The receiver will then remain in programming mode for approximately 5 minutes.

2. Position yourself in front of the roller shutter/blind with the MemoTec-915 in your hand.



3. Press programming button **P** auf on the back of the device briefly. The shutter/blind will start to move up and down. This will happen for approximately 2 minutes.

4. To define the keyboard layout, press the **UP** button on the MemoTec-915 as soon as the shutter/blind begins to move upwards (after approx. 1 second).

The shutter/blind will come to a halt briefly.

As soon as the shutter/blind begins to move again, press the **DOWN** button on the MemoTec-915.

The shutter/blind will come to a stop.

The MemoTec-915 has been successfully programmed.

### Programming additional transmitters

To programme additional transmitters in one receiver, please proceed as follows:

1. Press the **UP**, **DOWN** and programming button **P** on a transmitter that has already been programmed in the receiver until the LED goes out.
2. To define the keyboard layout, press the **UP** button on the handheld transmitter as soon as the shutter/blind begins to move upwards (after approx. 1 second).  
The shutter/blind will come briefly to a halt.  
As soon as the shutter/blind begins to move again, press the **DOWN** button on the handheld transmitter.  
The shutter/blind will come to a stop.  
The transmitter or this channel has been successfully programmed.

**Note:** If more than one receiver is connected to the same supply lead, all of these will be in programming mode simultaneously. The shutters/blinds will begin to move up and down "at random". The longer you take to carry out the programming, the larger the offset will be.

Individual channels can now be assigned to the given receiver.



To stop the brief UP and DOWN movements, press the **STOP** button on one of the pre-programmed handheld transmitters briefly.

Channel assignment/modification can now be carried out without you having to disconnect individual receivers.

Select the desired channel using the Select button.

If the shutter/blind moves in the wrong direction, the transmitter must be deleted and re-programmed.

### Intermediate position roller shutter/venetian blind

	Roller shutter	Venetian blind
		
Pos ▾	Intermediate position	Intermediate position
Pos △	Ventilation position	Reverse position

#### Programming Pos ▾

**Prerequisite:** The transmitter has been programmed and the end limit positions have been set. The shutter curtain/venetian blind is in the upper end limit position.

1. Adjust the shutter curtain/venetian blind into the desired position using the **DOWN** button.

**Note:** Keep the **DOWN** button pressed until the desired position is reached.

2. When the shutter curtain/venetian blind has reached the desired position, press the **STOP** button **in addition**. The shutter curtain/venetian blind will come to a stop. The intermediate position has been successfully programmed.

#### Programming Pos △

**Prerequisite:** The transmitter has been programmed and the end limit positions have been set. The shutter curtain/venetian blind is in the lower end limit position.

1. Move the shutter curtain/venetian blind in the UP direction using the handheld transmitter until the ventilation slits are open or the reverse position has been reached.

**Note:** Keep the **UP** button pressed until the desired position is reached.

2. When the shutter curtain/venetian blind has reached the desired position, press the **STOP** button **in addition**. The shutter curtain/venetian blind will come to a stop. The ventilation/reverse position has been successfully programmed.

#### Adjustment Pos ▾

**Prerequisite:** The transmitter has been programmed.

1. Press the **DOWN** button twice **in quick succession**.
2. The drive will adjust the shutter curtain/venetian blind into the stored intermediate position. If no intermediate position is stored, the shutter curtain/venetian blind is automatically adjusted into the lower limit position.

#### Adjustment Pos △ (roller shutter)

**Prerequisite:** The transmitter has been programmed.

1. Press the **UP** button twice **in quick succession**.
2. The shutter curtain is adjusted into the stored ventilation position. If no ventilation position is stored, the curtain is automatically adjusted into the upper limit position.

#### Adjustment Pos △ (venetian blind)

**Prerequisite:** The transmitter has been programmed.

1. Press the **UP** button twice **in quick succession**.
2. The blind is adjusted into the stored reverse position. If no reverse position is stored, the blind is automatically adjusted into the lower limit position.

#### Deleting Pos ▾

1. Press the following buttons **simultaneously**:
  - **DOWN** button
  - **STOP** button
2. Keep these two buttons pressed until the LED goes out briefly.

#### Deleting Pos △

1. Press the following buttons **simultaneously**:
  - **UP** button
  - **STOP** button
2. Keep these two buttons pressed until the LED goes out briefly.

### Deleting individual transmitters

Disconnect the fuse – and reconnect after a few seconds.

1. Press the following buttons **simultaneously**:
  - Programming button **P** (on back of device)
  - **STOP** button (on front of device)
2. Keep these two buttons pressed until the LED goes out briefly.

### Deleting all transmitters

Disconnect the fuse – and reconnect after a few seconds.

1. Press the following buttons **simultaneously**:
  - Programming button **P** (on back of device)
  - **UP** button
  - **STOP** button
  - **DOWN** button } (on front of device)
2. Keep these buttons pressed until the LED goes out briefly.

### Programming daily control commands

One UP and one DOWN control command can be programmed for each day of the week. These commands are automatically repeated every 24 hours.

If the same function is programmed twice, the old switching time is automatically overwritten.

#### UP control command

1. Press the **24 hr** programming button briefly.

You now have **15 seconds** to programme the switching time for the UP control command.
2. Press the **UP** button.

The control light will flash 3 times briefly to confirm. The control command for the upper limit position has been successfully programmed.  
**This control command will be automatically repeated every 24 hours.**

#### DOWN control command

1. Press the **24 hr** programming button briefly.

You now have **15 seconds** to programme the switching time for the DOWN control command.
2. Press the **DOWN** button.

The control light will flash 3 times briefly to confirm. The control command for the lower limit position has been successfully programmed.  
**This control command will be automatically repeated every 24 hours.**

### Deleting daily control commands

1. To delete all daily control commands, press the **24 hr** programming button **for 5 seconds or longer**.

The control light will flash 3 times briefly to confirm.  
**Individual daily control commands cannot be deleted.**

## Programming weekly control commands

Weekly switching times settings can be made for every day of the week.

The weekly control commands are not deleted if a daily control command is changed.

**Please note:** UP and DOWN control commands **must** be programmed for the relevant days on which the control commands are to be executed.

If the same function is programmed twice on the same day, the old switching time is automatically overwritten.

### UP control command

1. Press the **week** programming button briefly.  
You now have **15 seconds** to programme the switching time for the UP control command.
2. Press the **UP** button.  
The control light will flash 3 times briefly to confirm.  
The control command for the upper limit position has been successfully programmed.  
**This control command will be automatically repeated every 7 days.**

### DOWN control command

1. Press the **week** programming button briefly.  
You now have **15 seconds** to programme the switching time for the DOWN control command.
2. Press the **DOWN** button.  
The control light will flash 3 times briefly to confirm.  
The control command for the lower limit position has been successfully programmed.  
**This control command will be automatically repeated every 7 days.**

## Deleting weekly control commands

1. To delete all weekly control commands, press the **week** programming button for 5 seconds or longer.  
The control light will flash 3 times briefly to confirm.

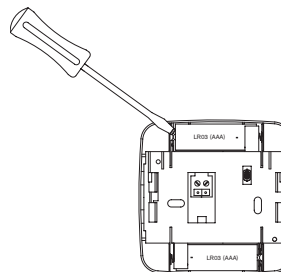
**Note:** If weekly control commands are deleted, your shutter/blind will be operated on the basis of the stored daily control commands.

## Technical data

Operating voltage	230-240 V AC / 50-60 Hz
Battery requirements	2 x LPO <sub>3</sub> (AAA)
System of protection	IP 20
Permissible ambient temperature	0 to +55 °C
Type of installation	Wall installation
Operating frequency	915,3 MHz

The maximum radio operating range is 25 m indoors and 350 m outdoors.

## Battery replacement



1. Open the battery compartment.
2. Insert the new batteries **properly**.

**Note:** Batteries must be replaced **within one minute**. Ensure that none of the buttons on the device are pressed **in the process**.

## Cleaning

Clean the device with a damp cloth only.  
Do not use a cleansing agent as doing so may damage the plastic.

## Troubleshooting

Problem	Cause	Remedy
Drive is not functioning.	Faulty connection.	Check connection.
Drive moves in the wrong direction.	Faulty connection.	Exchange $\Delta$ and $\nabla$ wires in the power supply unit.
MemoTec-915 does not execute the programmed control commands.	Sliding switch is set to manual mode. Switching times are not programmed.	Set the sliding switch to automatic mode. Programme switching times.

## General declaration of conformity:

The company elero GmbH hereby declares that the MemoTec-915 device complies with the basic requirements and other relevant regulations of the EC Directive 1999/5/EG.